

Grenada LBS Awareness & Implementation Workshop IWRM and links to LBS Protocol's National Programme of Action for Grenada

Christopher Cox, PhD
Programme Director

Caribbean Environmental Health Institute
6th April 2009



Outline

- Integrated Water Resources management (IWRM) - background
- The IWRM Roadmap – toward preparation of an IWRM Plan
- The link between IWRM and the National Plan of Action (NPA) process

Caribbean Environmental Health Institute
P.O.Box 1111, The Morne, Castries, St. Lucia
www.cehi.org.lc



CEHI mandate

- CEHI was established by the Governments of the Caribbean Community (CARICOM) in the late 1980's to respond to the Environmental Health and Management concerns of its Member States. Through CARICOM Protocols it is an Institution of the Community
 - 16 Member States including all OECS countries
 - CEHI established by CARICOM Governments in 1989
 - Located in St. Lucia
- Co-executing agency with UNEP-CAR/RCU for the GEF-IWCAM Project



Caribbean Environmental Health Institute
P.O.Box 1111, The Morne, Castries, St. Lucia
www.cehi.org.lc



IWRM - Background

- What is IWRM?
 - A systematic process for the sustainable development, allocation and monitoring of water resource use in the context of social, economic and environmental objectives
- Means that all the different uses of water resources are considered together
- Water allocations and management decisions consider the effects of each use on the others

Caribbean Environmental Health Institute
P.O.Box 1111, The Morne, Castries, St. Lucia
www.cehi.org.lc



What is an IWRM plan?

- A strategic statement that details a country's actions toward to sustainable management of its water resources
 - Scope - Fresh and coastal waters
 - Defines the issues and the strategic responses by all actors
 - Lays out the indicative cost outlay required for action over short to medium-term; basis for sourcing funding internally or externally



Caribbean Environmental Health Institute
P.O.Box 1111, The Morne, Castries, St. Lucia
www.cehi.org.lc



IWRM Plan linkages

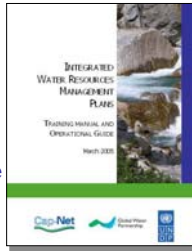
- Link to other strategies and plans
 - NEMS and other existing national plans/strategies
 - National MDG strategies
 - National poverty reduction strategy papers (PRSPs)
 - National 5-year plans
 - National sustainable development strategies
 - National Biodiversity Strategy and Action Plans

Caribbean Environmental Health Institute
P.O.Box 1111, The Morne, Castries, St. Lucia
www.cehi.org.lc



Typical IWRM Plan structure

- Description of existing water management approach.
- A description of current water resources situation in the country (a water resource assessment)
- A description of the scope of the plan. (Goals, aims and objectives we wish to attain)
- A description of how we plan to achieve the vision, goals, aims and objectives.
- Links the IWRM plan to other national processes and/or plans
- Resource requirements to implement the plan



Caribbean Environmental Health Institute
P.O.Box 1111, The Morne, Castries, St. Lucia
www.cehi.org.lc

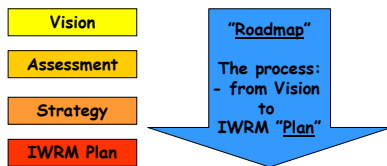


Processes in IWRM



IWRM Roadmap: Plan for the process

- The IWRM Roadmap
 - A description of the steps required in the development of a national integrated water resources management plan



Caribbean Environmental Health Institute
P.O.Box 1111, The Morne, Castries, St. Lucia
www.cehi.org.lc



Major steps in IWRM Roadmap

1. Process initiation
2. Steering committee establishment
3. Process management team establishment
4. Stakeholder involvement plan development and implementation
5. Communications plan development and implementation
6. Situational Analysis and IWRM Plan Framework
7. Vision Statement and Goals Articulation
8. Evaluate IWRM Plan options
9. IWRM Plan promotion, adoption and implementation

Caribbean Environmental Health Institute
P.O.Box 1111, The Morne, Castries, St. Lucia
www.cehi.org.lc



IWRM Plan Roadmap Workplan (Union Island, SVG example)

Key activities by Action area	Lead Responsibility	Quarters by year								
		Year 1				Year 2				
		1	2	3	4	5	6	7	8	
Action 1: Process initiation										
1.1	Initial national stakeholder consultation	ESU, MoGA								
1.2	Union Island local level consultation	DO								
1.3	Procurement of financing for plan development	DO, ESU								
Action 2: Steering Committee (SC) establishment										
2.1	Draft TORs for Steering Committee	SC								
Action 3: Process management team (PMT) establishment										
3.1	Draft TORs for Project Management Team	SC								
3.2	Identify/recruit members of PMT	SC								
Action 4: Stakeholder involvement plan development and implementation										
4.1	Focus group meetings	SC, PMT								
4.2	Compilation of findings	PMT								
4.3	Stakeholder reviews	PMT								

SC - Steering Committee
PMT - Project Management Committee
ESU - Environmental Services Unit, Ministry of Health and Environment
DO - Urban Land Development Office
MoGA - Ministry of Growth Affairs
GIS - Government Information Services



IWRM Plan Roadmap Workplan (Union Island, SVG example)

Key activities by Action area	Lead Responsibility	Quarters by year								
		Year 1				Year 2				
		1	2	3	4	5	6	7	8	
Action 5: Communications plan development and implementation										
5.1	Development of messages	SC								
5.2	Recruit communications specialist	SC, PMT								
5.3	Recruitment of professional services (awareness material)	PMT								
5.4	Stakeholder reviews	PMT								
5.5	Identify partners (possibly through MOUs)	SC, PMT, ESU								
5.6	Production of materials	PMT								
5.7	Dissemination of awareness materials	SC, PMT, GIS								
Action 6: Situational Analysis and IWRM Plan Framework										
6.1	Preparation of TORs for expert studies	SC, PMT, ESU								
6.2	Recruit specialist for key studies	SC, PMT								
6.3	Execute studies	PMT								
6.4	Compilation of findings	PMT								
6.5	Presentation to stakeholders	SC, PMT								

Caribbean Environmental Health Institute
P.O.Box 1111, The Morne, Castries, St. Lucia
www.cehi.org.lc



IWRM Plan Roadmap Workplan (Union Island, SVG example)

Key activities by Action area	Lead Responsibility	Quarters by year								
		Year 1				Year 2				
		1	2	3	4	5	6	7	8	
Action 7: Vision Statement and Goals Articulation										
7.1	Recruitment of consultant to prepare IWRM Plan	SC, PMT								
7.2	Stakeholder consultation - vision and goal setting	SC								
7.3	Focus group meetings - specific information inputs	SC, PMT								
7.4	Compilation of Findings	PMT								
7.5	Stakeholder review consultations - draft Plan review	SC, PMT								
Action 8: Evaluate IWRM Plan options										
8.1	Stakeholder review consultations - draft Plan review	SC								
Action 9: IWRM Plan promotion, adoption and implementation										
9.1	Presentation at national level - broader stakeholder group	SC, ESU, DO, MeGA								
9.2	Presentation and ratification at Cabinet level	SC, ESU, DO, MeGA								
9.3	Commencement of implementation									

Caribbean Environmental Health Institute
P.O.Box 1111, The Morne, Castries, St. Lucia
www.cehi.org.lc



Roadmapping process: Outcomes

- IWRM Road map document
 - Costed proposal for procuring \$\$ for full plan development (next stage)
- Sensitized public and lead actors
- High-level government endorsement for commitment to IWRM Planning process

Caribbean Environmental Health Institute
P.O.Box 1111, The Morne, Castries, St. Lucia
www.cehi.org.lc



Grenada's progress

- Draft IWRM Roadmap prepared
- National Water Resources Policy ratified
- Legislative and institutional arrangements defined
- Ongoing Steps in the process
 1. Process initiation
 2. Steering committee establishment
 3. Process management team establishment
 4. Stakeholder involvement plan development and implementation
 5. Situational Analysis and IWRM Plan Framework
- Next steps
 1. Situational Analysis and IWRM Plan Framework
 2. Evaluate IWRM Plan options

Caribbean Environmental Health Institute
P.O.Box 1111, The Morne, Castries, St. Lucia
www.cehi.org.lc



The IWRM – NPA Link

Illustrated by watershed-level NPA process
for Guyana

Background to the GPA and NPA

- Basic functions of the NPA process
 - Increase awareness and understanding of the value, benefits and vulnerability of coastal and marine environments
 - Provide a flexible mechanism for identifying and addressing priority problems through partnerships and consensus amongst stakeholders
 - Identify, finance and implement realistic and affordable activities that address specific causes of degradation or threats and that show positive results
 - Mobilize resources and partners, including the private sector
 - Strengthen the public sector's ability to effectively respond to causes of degradation and ensure sustainability of activities undertaken
 - Enhance environmental, financial, institutional, legislation and regulation frameworks
- Similar conceptual framework to IWRM

Caribbean Environmental Health Institute
P.O.Box 1111, The Morne, Castries, St. Lucia
www.cehi.org.lc



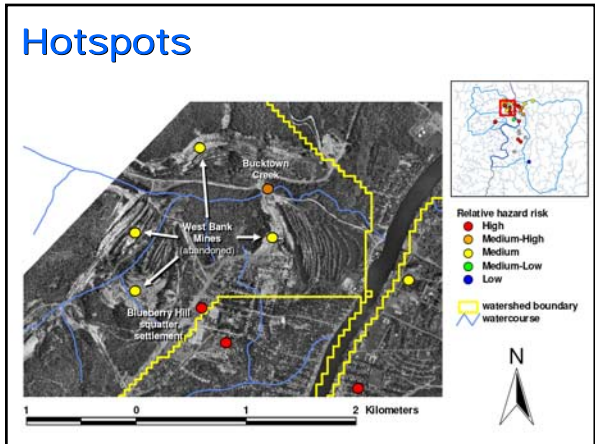
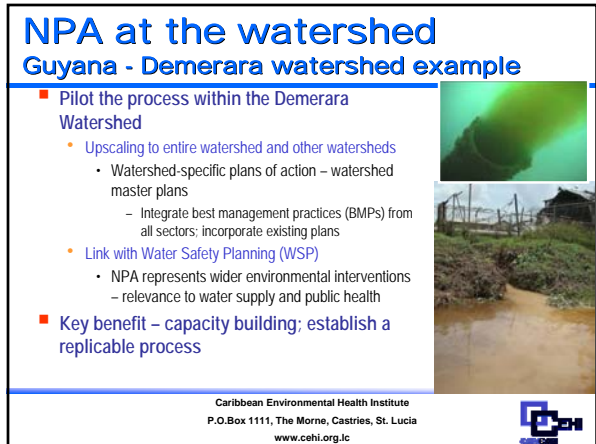
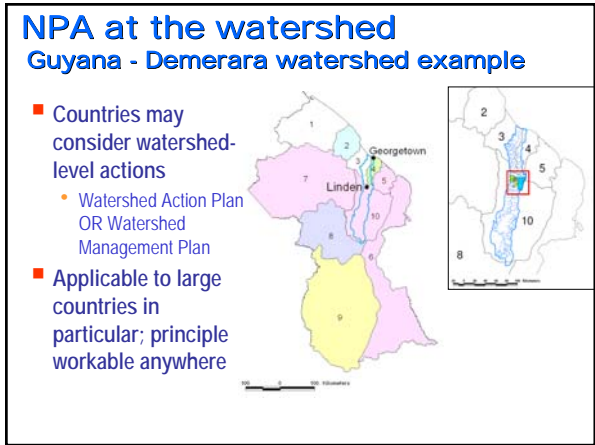
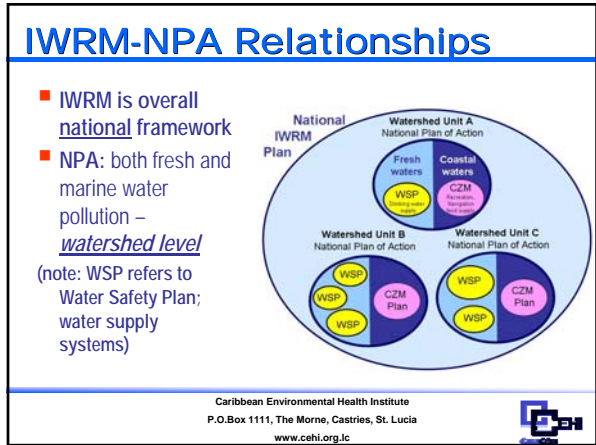
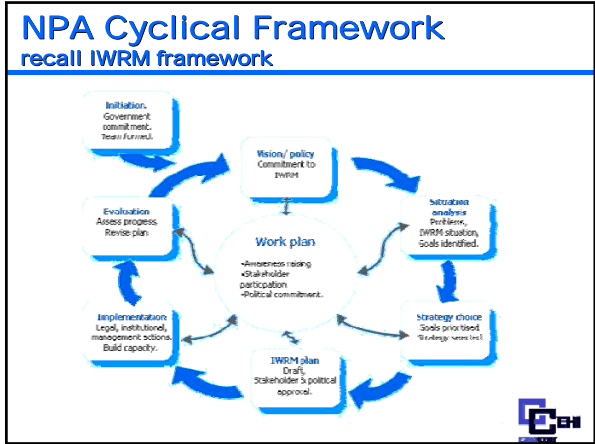
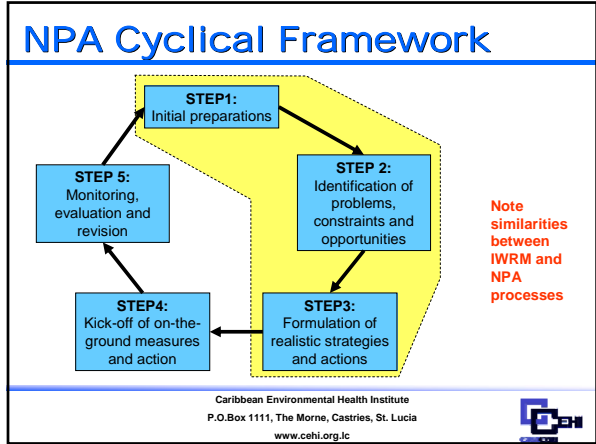
Background to the GPA and NPA

- Guidebook
 - Used as the design framework
 - http://www.gpa.unep.org/documents/2006_npa_handbook_for_english.pdf



Caribbean Environmental Health Institute
P.O.Box 1111, The Morne, Castries, St. Lucia
www.cehi.org.lc





Watershed Plan of Action Control measures

■ Example from Guyana

Hazard characterization Basel Convention waste stream codes (Annex 4) Hazard description Risk factors: human and ecosystem	Hazard Type B (chemical) C (thermal) F (physical)	Risk* + (High) M (Medium) L (Low)	Existing Control Measures and/or Proposed Measures
<p>KD1: Abandoned mines: West Bank mines (bauxite)</p> <p>Waste stream code: 19a</p> <p>Risk factors:</p> <ul style="list-style-type: none"> Low direct risk to human health, although the increased turbidity can result in an environment that favours the proliferation of potentially harmful bacteria <p>Ecosystems:</p> <ul style="list-style-type: none"> Risk to aquatic flora and fauna through physical smothering. Ambient water temperatures may be higher on account of high sediment loads. The mining operation itself would have severely compromised the natural forest ecosystems that existed in the areas before operations commenced. 	P	M	<ol style="list-style-type: none"> Existing control measures: <ol style="list-style-type: none"> No measures Proposed control measures: <ol style="list-style-type: none"> Identify the most appropriate mechanism to coordinate and raise financing for a land reclamation effort. A likely entry point may be the "Forest Landscape Restoration Project" which seeks to restore mined-out and degraded areas in Guyana. Financing for this project is being sought. Lead agency responsibilities will also need to be considered Revegetate the spoil heaps, with priority attention paid to rapidly eroding areas. Commission a feasibility study to evaluate the possibility of conversion of these mined-out areas to sanitary landfills for waste from Linden and possibly Georgetown) in a manner that will eventually result in landscape reclamation. The revenue generated from tipping fees could be recycled into landscape restoration efforts.

Caribbean Environmental Health Institute
P.O.Box 1111, The Morne, Castries, St. Lucia
www.cehi.org.lc

Watershed Plan of Action Control measures - targets/indicators

■ Example from Guyana

Point source Hazard	Recommended Control Measures Control measures that can fall within amalgamated programme areas are flagged as follows: [CEI] capacity building for any mgmt [LFC] legislative, policy strengthening [WWM] solid waste management [WQM] water quality monitoring [WWM] waste water management	Outputs/Targets and Indicators P - process indicator S - stress reduction indicator E - environmental status indicator	Lead agency responsibility for implementation	Timeframe (estimated from commencement of implementation)
KK8: Forestry concessions at Chikaburu along Iluni Trail	Close collaboration between HUC and Town Council and the Forestry Commission to ensure environmental compliance	Environmental audit report (P) No evidence of waste (oil, other residues, etc) (E)	Guyana Forestry Commission (GFC); RDC; LDC; GFC.	Short long term, ongoing Short long term, ongoing
KK9: Urban encroachment around Amella's Ward wellhead	Establish a statutory zoning regulation (regularly-based) to define no-build restrictions within the wellhead area Implement a specific monitoring regime (inclusive of test sample wells) for detection of pollutant contamination within the aquifer (WQM)	Zoning protocol for drinking water supply wells (P) Test monitoring wells installed (P) WQ testing: minimal to zero microbial detection in raw water (E)	GWI LTCEHD (supported by the CHAPA) GWI LTCEHD	Medium-term Short long term, ongoing

Caribbean Environmental Health Institute
P.O.Box 1111, The Morne, Castries, St. Lucia
www.cehi.org.lc



Thank you

For more resources
Caribbean Environmental Health Institute
P.O. Box 1111, The Morne, Castries
St. Lucia
Tel: (758) 452-2501
E-mail: cehi@candw.lc
Web: www.cehi.org.lc